



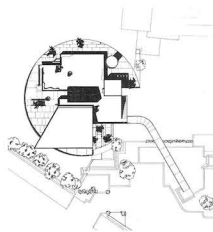
HEART OF TOWN

Lancaster Square is ready to become the new focus of activity in Lancaster, Pennsylvania. Designed by Gruen Associates, the 12-acre urban renewal project includes shops, offices, an apartment building, a 237-room hotel,

and two six-story parking garages, all linked by three decks of pedestrian arcades around a central open space. This square, designed by landscape architects M. Paul Friedberg & Associates, will have fountains in summer, a skating rink in winter.

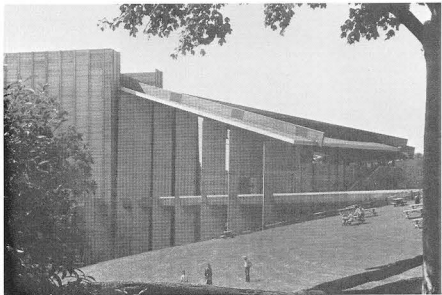
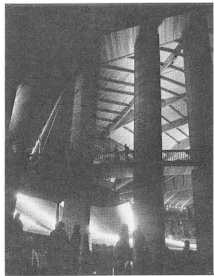
ACADEMIC ASSEMBLAGE

To fit a vestpocket site in Bangkok, Architect Ongard Satrabhandhu stacked the various elements of the new Panabhandhu school vertically—each layer occupying part of a broken circle (plan right). Above a ground-level assembly area are an administrative floor (reached by ramp), three floors of classrooms, two floors of dormitories for boarding students and, on the roof, an auditorium and a director's apartment.



ANOTHER VIENNA

Wolf Trap Farm at Vienna, Va., is the country's first National Park specifically for the arts. Its focal point is Filene Center, an open-air auditorium designed by Architects Edward Knowles and John MacFadyen. The center seats 3,506 under roof, plus 3,000 more on the lawn, and is fully equipped for opera as well as concerts. Its diverse forms—frankly expressing functional parts—are tied together with a uniform cladding of red cedar, which looks at home in the well-preserved farm landscape.



ODD COUPLE

Standing arm in arm on the skyline of Kampala, Uganda, are the structures of Government's new Office Towers and Trade Center. Designed by Architect Renato Severino, the steel-framed buildings were almost totally prefabricated in Italy and shipped to Kampala for assembly by local workmen—at an estimated saving of 20 percent over conven-

ventional methods. Surrounding the towers (but not touching them) is a base structure containing commercial space. Sun shades around the upper floors are of brown-tinted glass. At the tenth floor, where the towers are linked, is a projecting conference-cafeteria suite. This special floor and the elevated plaza below it are vantage points along Kampala's main parade route.